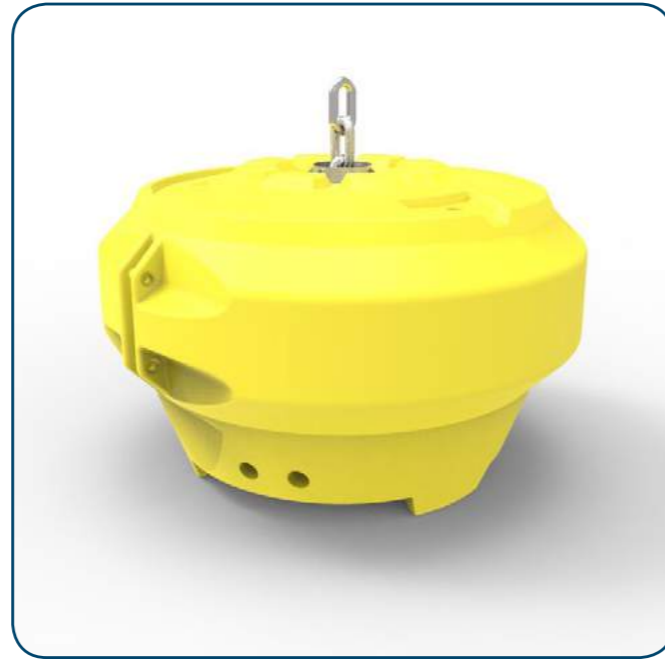
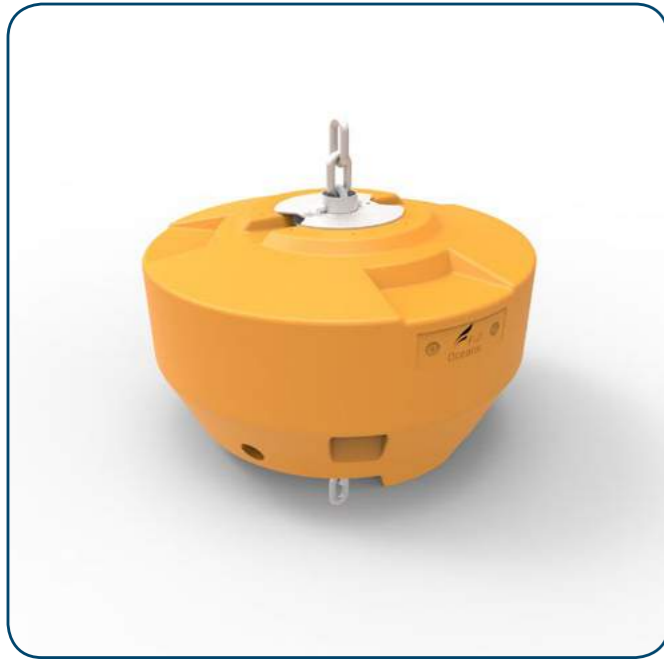


MOORING BUOYS



| SPECIFICATIONS | FLCMOOR1200 | FLCMOOR1500 | FLCMOOR1800 | FLCMOOR2200 |
|-----------------------|--------------|--------------|--------------|--------------|
| Diameter (mm) | 1200 | 1500 | 1800 | 2200 |
| Net buoyancy (l) | 543 | 950 | 1488 | 3243 |
| Weight (kg) | 92 | 127 | 210 | 345 |
| Height (mm) | 779 | 929 | 1150 | 1420 |
| Safe Working Load (T) | 10 | 10 | 20 | 20 |
| Recommended Chain | ND 25 4D SL2 | ND 25 4D SL2 | ND 35 4D SL2 | ND 35 4D SL2 |

Rotationally molded UV stabilized high density polyethylene. S235 steel galvanized. Polyurethane foam.
Available in a wide range of colors.



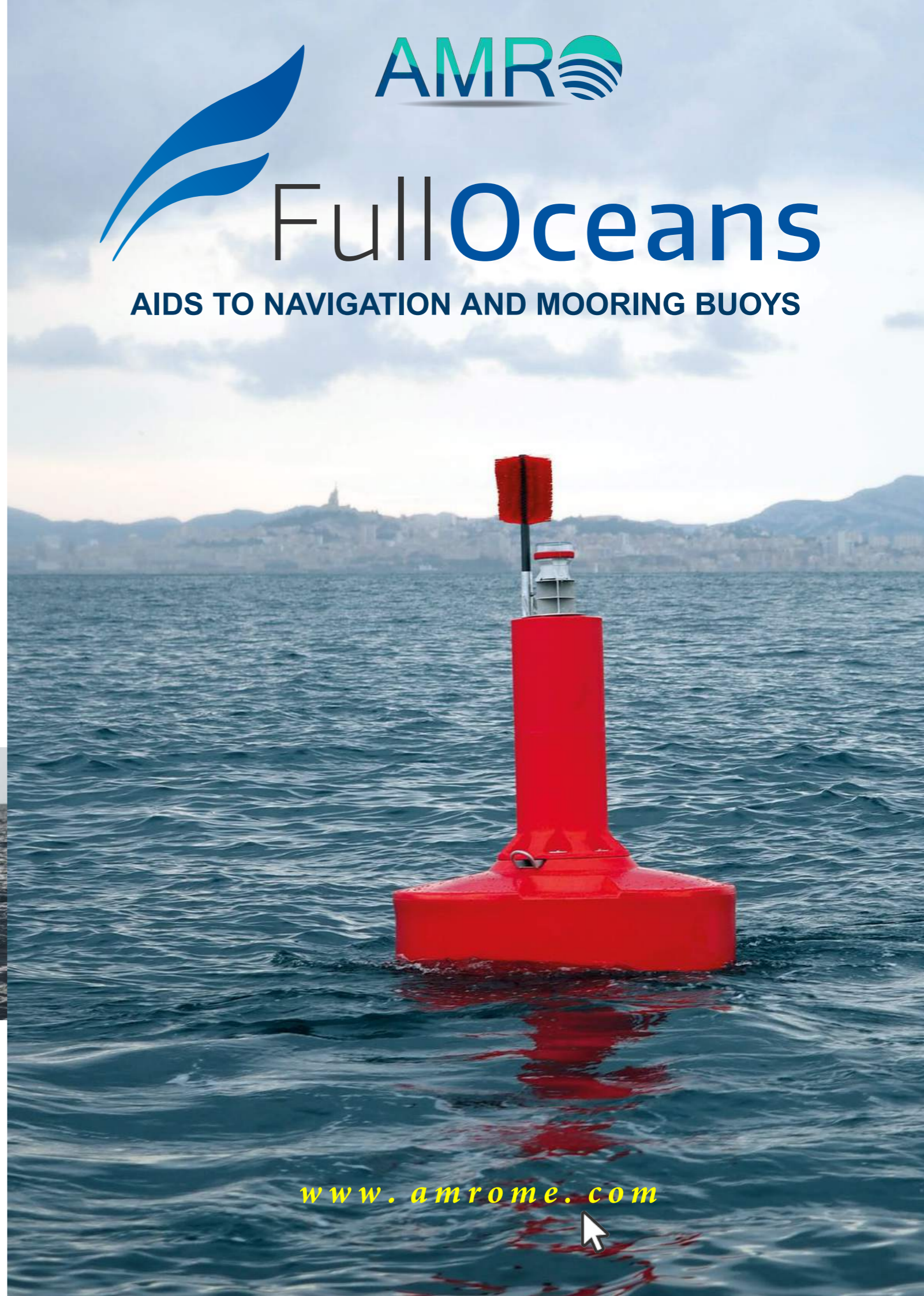
Official distributor



AMRO Marine Middle East LLC
Tel: +971 6 766 6403
E: info@amrome.com
Web: www.amrome.com



AIDS TO NAVIGATION AND MOORING BUOYS



www.amrome.com

AIDS TO NAVIGATION AND MOORING BUOYS

FullOceans is a French manufacturer specialized in aids to navigation and mooring buoys for the worldwide market.

Integrating the latest R&D innovations and manufacturing technologies, FullOceans produces quality and safety, as well as value-for-money products.

FullOceans commits to invest in the best engineering and industrial manufacturing solutions to reduce the costs of buoys without forgetting the quality and performance demands of the buoys market.

Durable and reliable, FullOceans buoy's range is the perfect solution to meet the needs of maritime, coastal, offshore, river and fluvial projects.



FLC1200

| DIMENSION | |
|--|---------|
| Diameter (mm) | 1 200 |
| Volume (l) | 570 |
| Draught (mm) | 290 |
| Freeboard (mm) | 435 |
| Overall height (mm) | 1 775 |
| Mast (mm) | 1 050 |
| TECHNICAL SPECIFICATIONS | |
| Weight with ballast (kg) | 127 |
| Polyurethane foam (kg/m ³) | 40 |
| Submergence (kg/cm) | 1.1 |
| Visible area (m ²) | 1.1 |
| Focal plane max (mm)* | 2 058 |
| Current (knots) | up to 4 |

Options: Carmanah lanterns (M550, M650H), topmarks and St Andrew cross, radar reflector



FLC1500

| DIMENSION | |
|--|---------|
| Diameter (mm) | 1 500 |
| Volume (l) | 987 |
| Draught (mm) | 355 |
| Freeboard (mm) | 520 |
| Overall height (mm) | 1 925 |
| Mast (mm) | 1 050 |
| TECHNICAL SPECIFICATIONS | |
| Weight with ballast (kg) | 208 |
| Polyurethane foam (kg/m ³) | 40 |
| Submergence (kg/cm) | 1.3 |
| Visible area (m ²) | 1.7 |
| Focal plane max (mm)* | 2 191 |
| Current (knots) | up to 5 |

Options: Carmanah lanterns (M550, M650H), topmarks and St Andrew cross, radar reflector



FLC1800

| DIMENSION | |
|--|---------|
| Diameter (mm) | 1 800 |
| Volume (l) | 1 544 |
| Draught (mm) | 560 |
| Freeboard (mm) | 521 |
| Overall height (mm) | 2 710 |
| Mast (mm) | 1 554 |
| TECHNICAL SPECIFICATIONS | |
| Weight with ballast (kg) | 432 |
| Polyurethane foam (kg/m ³) | 40 |
| Submergence (kg/cm) | 2.1 |
| Visible area (m ²) | 2.1 |
| Focal plane max (mm)* | 2 940 |
| Current (knots) | up to 6 |

Options: Carmanah lanterns (M650H, M850, M860), topmarks and St Andrew cross, service ladder, solar pyramid, high visibility day mark



FLC2200

| DIMENSION | |
|--|---------|
| Diameter (mm) | 2 200 |
| Volume (l) | 3 335 |
| Draught (mm) | 560 |
| Freeboard (mm) | 790 |
| Overall height (mm) | 3 480 |
| Mast (mm) | 2 054 |
| TECHNICAL SPECIFICATIONS | |
| Weight with ballast (kg) | 725 |
| Polyurethane foam (kg/m ³) | 40 |
| Submergence (kg/cm) | 3.8 |
| Visible area (m ²) | 3.3 |
| Focal plane max (mm)* | 3 700 |
| Current (knots) | up to 6 |

Options: Carmanah lanterns (M650H, M850, M860), topmarks and St Andrew cross, service ladder, solar pyramid, high visibility day mark



Eco friendly: Recyclable polyethylene, heavy metal free



Ballasts: Cast iron



Float and mast: UV-stabilized polyethylene high density



Lightness and Modularity: Easy assembly and deploy



Structure, lifting and mooring points: Hot dip galvanized S235-steel



IALA specifications: Pigments integrated into the polyethylene for no painting ever